



The Long Play Collection

PLAY ▶ always & everywhere
STOP ■ noise & wear
PAUSE || in style & comfort
REPEAT ↻ longevity & quality

arc edition®
performance flooring
by Balta

33

The Long Play Collection

Airport	4
Office	10
Hotel	14
Restaurant	18
Culture	22
Department Store	26
Technical Specifications	30

▶ Airport

The airport is a portal, a gateway, a labyrinth, the first step towards far-flung destinations and high-end business deals. Arrivals. Departures. Baggage claims. Check-ins. A hive of activity, filled with fresh memories and wired anticipation. Business or pleasure? An airport needs a stylish and professional floor that is equipped to pass the most strenuous security check with flying colours.



► **BLITZ 99**

ACTION BACK 400 CM
100% PA 6 IMPREL®
SOLUTION DYED



▶ **ROCCA 78**

▶ ACTION BACK 400 CM

100% PA 6 IMPREL®

Office

“Business as usual”. That’s music to your ears. Sharing moments and meetings. The urban beats and crescendo rhythms of work. Play it forward. Brainstorm. Inspire. Broadcast your styles and opinions. Creative soloists and orchestrated team efforts, in tune, in sync, in fashion. This is a home away from home, a place to share a groove. Captains of industry driving fast-paced innovation. Don’t spin out of control, when you dive into a new idea feet-first: choose long-play.



► **GRANATA 96**

ACTION BACK 400 CM
100% PA 6 IMPREL®

Hotel

A safe haven, a place to unwind, to put your feet up after a long day of long play. Escaping the soundtrack of the city. In a hotel, oozing style and soul, living and breathing (air) quality. Rest and recharge, so you may begin the day from scratch. Impressions drop away. Energy fills the room. You could play these blissful moments on repeat forever. Just like your favourite song.



► **ROCKET 38**

ACTION BACK 400 CM
100% PA 6 IMPREL®

Restaurant

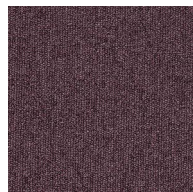
The aroma of freshly ground coffee for breakfast. The rhythmical chatter and patter of people and plates at lunch. A warm, sweet-sounding record whose notes gently sway in the background as you enjoy dinner. A pleasant conversation, like revolving doors, opening up countless opportunities, drowning out the white noise. Mind and senses tuned into the food, the company, the atmosphere. A restaurant that sounds and feels like home.



Culture

The scene is set. The cast is ready for a strong performance. Dim the lights. Hush the sound. The house is packed and waits with bated breath. A spellbinding prologue, a mesmerizing diversion, romance and suspense, ending on a high note, catharsis, an ovation. The holy trinity of time, place and style. The curtains open, revealing a brand-new and boundless world. Fashion and fantasy combine into a long play, a lasting impression, free of intermissions. A magic carpet ride. The show must go on. All the world is a stage. Encore!





► **MASTER 19**

ACTION BACK 400 CM
100% PA 6 IMPREL®

▶ Department Store

A cornucopia of attraction. Shoppers, in awe, in orbit, seduced by a thousand promises. They become part of a glossy gyroscope of colours and choice, the sparkling wheel of fortune and fame, a spiral of sensations and catchy hooks, 33 rpm. Boxes and husbands being dragged to and fro. Window-shoppers walking around, eavesdropping. Hipsters and fashionistas, stalking their prey. A symphony of silence before the storm. Items, brands, designs, inspirations, jockeying for attention. Step aside and yield the floor, for the dance has only just begun.



► **MASTER 76, 370**

ACTION BACK 400 CM
100% PA 6 IMPREL®

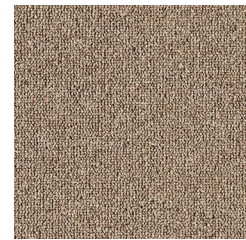


ROCCA

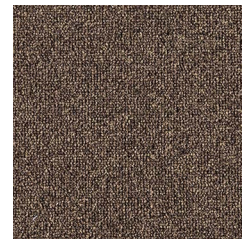
COLOURS



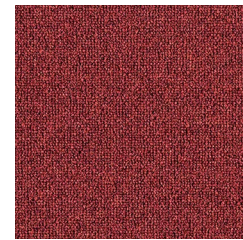
ROCCA 38



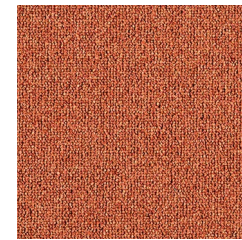
ROCCA 45



ROCCA 48



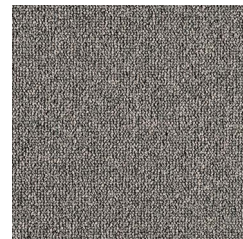
ROCCA 16



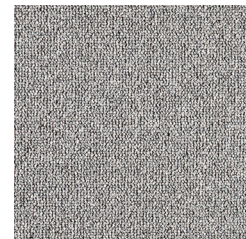
ROCCA 54



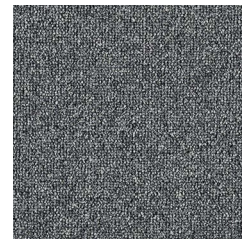
ROCCA 23



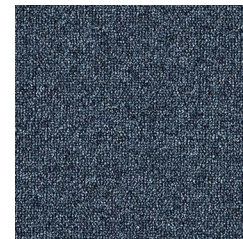
ROCCA 96



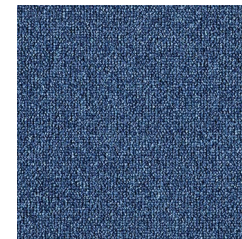
ROCCA 95



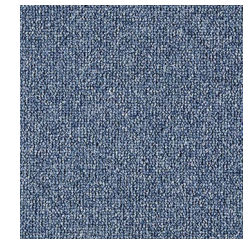
ROCCA 98



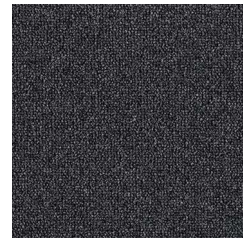
ROCCA 78



ROCCA 76



ROCCA 75



ROCCA 99

ROCCA

TECHNICAL SPECIFICATIONS

CONSTRUCTION

Tufting 1/10" loop pile

PILE MATERIAL

100% PA 6 IMPREL®

PRIMARY BACKING

Non woven PES

SECONDARY BACKING

Action Back

PILE WEIGHT

Ca. 750 gr/m²

TOTAL WEIGHT

Ca. 1.889 gr/m²

PILE HEIGHT

Ca. 2.8 mm

TOTAL HEIGHT

Ca. 5.8 mm

TUFT DENSITY

Ca. 127 380/m²

PILE DENSITY

Ca. 0.151 g/cm³

CLASSIFICATION

EN 1307

33 - LC2

CASTOR CHAIR SUITABILITY

EN 985

A: intensive use

STAIR SUITABILITY

EN 1963

A: intensive use

PERMANENTLY ANTISTATIC

ISO 6356

≤ 2 kV

IMPACT NOISE RATING

ISO 140-8

22 dB ΔLw

SOUND ABSORPTION

ISO 354

0.15 αw

THERMAL RESISTANCE

ISO 8302

0.06 m² K/W

FASTNESS TO LIGHT

ISO 105-B02

≥ 5-6

COLOUR FASTNESS TO WATER

EN ISO 105-E01

≥ 4-5

FIRE RESISTANCE

EN 13501-1

Cfl-s1

RUBBING FASTNESS

EN ISO 105-X12

≥ 4

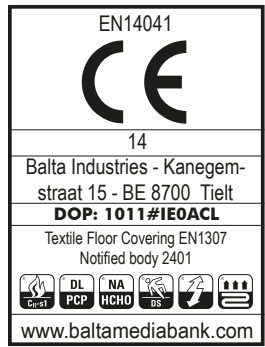
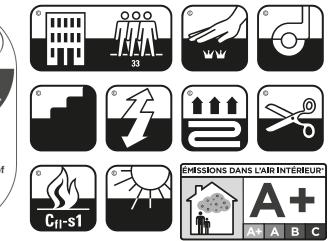
NUMBER OF COLOURS

13

WIDTH

EN ISO 3018

ca. 400 cm

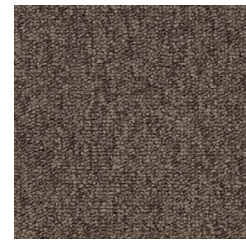


BLITZ

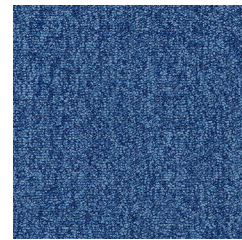
COLOURS



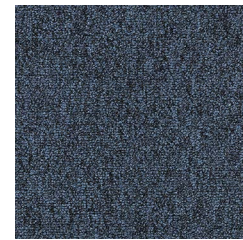
BLITZ 33



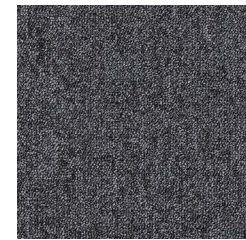
BLITZ 47



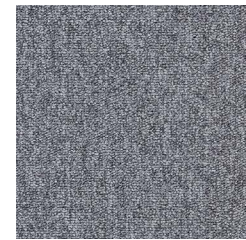
BLITZ 75



BLITZ 78



BLITZ 99



BLITZ 95

BLITZ

TECHNICAL SPECIFICATIONS

CONSTRUCTION

Tufting 1/10" loop pile

PILE MATERIAL

100% PA 6 IMPREL® solution dyed

PRIMARY BACKING

Non woven PES

SECONDARY BACKING

Action Back

PILE WEIGHT

Ca. 540 gr/m²

TOTAL WEIGHT

Ca. 1 608 gr/m²

PILE HEIGHT

Ca. 2.9 mm

TOTAL HEIGHT

Ca. 5.4 mm

TUFT DENSITY

Ca. 156 000/m²

PILE DENSITY

Ca. 0.123 g/cm³

CLASSIFICATION

EN 1307

33 - LC1

CASTOR CHAIR SUITABILITY

EN 985

A: intensive use

STAIR SUITABILITY

EN 1963

A: intensive use

PERMANENTLY ANTISTATIC

ISO 6356

≤ 2 kV

IMPACT NOISE RATING

ISO 140-8

27 dB ΔLw

SOUND ABSORPTION

ISO 354

0.20 αw

THERMAL RESISTANCE

ISO 8302

0.07 m² K/W

FASTNESS TO LIGHT

ISO 105-B02

≥ 5-6

COLOUR FASTNESS TO WATER

EN ISO 105-E01

≥ 4-5

FIRE RESISTANCE

EN 13501-1

Bfl-s1

only with full adhesion

RUBBING FASTNESS

EN ISO 105-X12

≥ 4

NUMBER OF COLOURS

6

WIDTH

EN ISO 3018

ca. 400 cm

TUV NORD
 Priority Market Test
 Suitable for Allergic Persons
 Wall to wall carpet of allergen-tested material
 3.2-2384/05

CE
 EN14041
 15
 Balta Industries - Kanegem-straat 15 - BE 8700 Tielt
DOP: 1011#IE0ABV
 Textile Floor Covering EN1307
 Notified body 2401

REG. NR
OB2FC58D
 www.pro-dis.info

EAC
 DL NA HCHO PCP HCHO DS

www.baltamedia.com

GRANATA

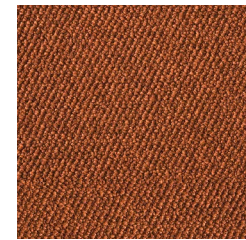
COLOURS



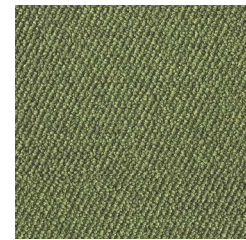
GRANATA 38



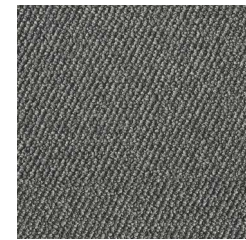
GRANATA 45



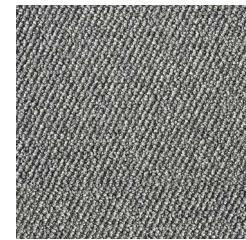
GRANATA 54



GRANATA 23



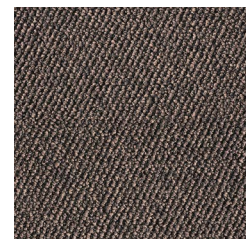
GRANATA 98



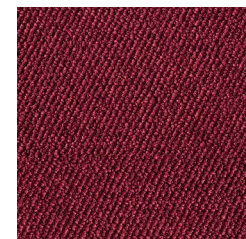
GRANATA 95



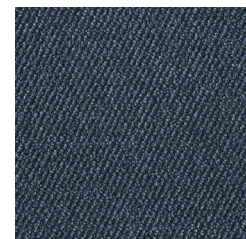
GRANATA 96



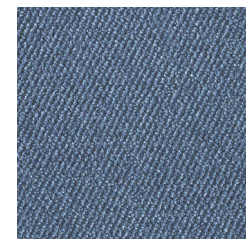
GRANATA 48



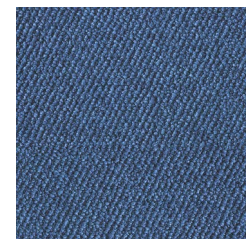
GRANATA 16



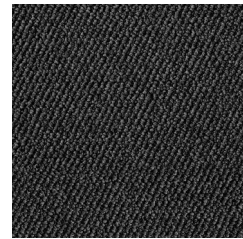
GRANATA 78



GRANATA 75



GRANATA 76



GRANATA 99

GRANATA

TECHNICAL SPECIFICATIONS

CONSTRUCTION

Tufting 1/10" structured loop pile

PILE MATERIAL

100% PA 6 IMPREL®

PRIMARY BACKING

Non woven PES

SECONDARY BACKING

Action Back

PILE WEIGHT

Ca. 800 gr/m²

TOTAL WEIGHT

Ca. 1.729 gr/m²

PILE HEIGHT

Ca. 2,9 mm

TOTAL HEIGHT

Ca. 5,6 mm

TUFT DENSITY

Ca. 150 540/m²

PILE DENSITY

Ca. 0.163 g/cm³

CLASSIFICATION

EN 1307

33 - LC2

CASTOR CHAIR SUITABILITY

EN 985

A: intensive use

STAIR SUITABILITY

EN 1963

A: intensive use

PERMANENTLY ANTISTATIC

ISO 6356

≤ 2 kV

IMPACT NOISE RATING

ISO 140-8

23 dB ΔLw

SOUND ABSORPTION

ISO 354

0.15 αw

THERMAL RESISTANCE

ISO 8302

0.07 m² K/W

FASTNESS TO LIGHT

ISO 105-B02

≥ 5-6

COLOUR FASTNESS TO WATER

EN ISO 105-E01

≥ 4-5

FIRE RESISTANCE

EN 13501-1

Cfl-s1

RUBBING FASTNESS

EN ISO 105-X12

≥ 4

NUMBER OF COLOURS

13

WIDTH

EN ISO 3018

ca. 400 cm



ROCKET

COLOURS



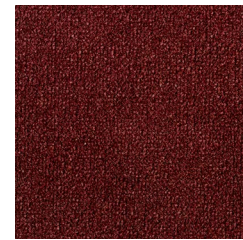
ROCKET 38



ROCKET 45



ROCKET 48



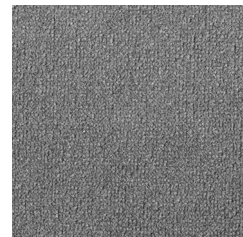
ROCKET 16



ROCKET 54



ROCKET 23



ROCKET 95



ROCKET 96



ROCKET 98



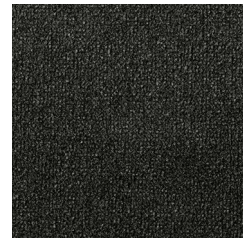
ROCKET 78



ROCKET 76



ROCKET 75



ROCKET 99

ROCKET

TECHNICAL SPECIFICATIONS

CONSTRUCTION

Tufting 1/10" cut pile

PILE MATERIAL

100% PA 6 IMPREL®

PRIMARY BACKING

Non woven PES

SECONDARY BACKING

Action Back

PILE WEIGHT

Ca. 850 gr/m²

TOTAL WEIGHT

Ca. 1.820 gr/m²

PILE HEIGHT

Ca. 3,6 mm

TOTAL HEIGHT

Ca. 6 mm

TUFT DENSITY

Ca. 159 900/m²

PILE DENSITY

Ca. 0.159 g/cm³

CLASSIFICATION

EN 1307

33 - LC2

CASTOR CHAIR SUITABILITY

EN 985

A: intensive use

STAIR SUITABILITY

EN 1963

A: intensive use

PERMANENTLY ANTISTATIC

ISO 6356

≤ 2 kV

IMPACT NOISE RATING

ISO 140-8

23 dB ΔLw

SOUND ABSORPTION

ISO 354

0.15 αw

THERMAL RESISTANCE

ISO 8302

0.06 m² K/W

FASTNESS TO LIGHT

ISO 105-B02

≥ 5-6

COLOUR FASTNESS TO WATER

EN ISO 105-E01

≥ 4-5

FIRE RESISTANCE

EN 13501-1

Cfl-s1

RUBBING FASTNESS

EN ISO 105-X12

≥ 4

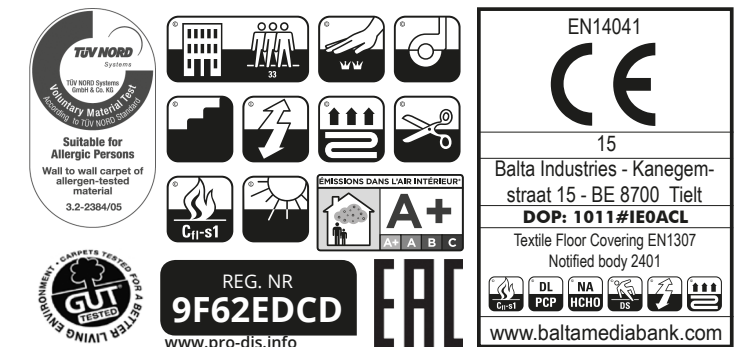
NUMBER OF COLOURS

13

WIDTH

EN ISO 3018

ca. 400 cm



MASTER

COLOURS



MASTER

TECHNICAL SPECIFICATIONS

CONSTRUCTION

Tufting 1/10" loop pile

PILE MATERIAL

100% PA 6 IMPREL®

PRIMARY BACKING

Non woven PES

SECONDARY BACKING

Action Back

PILE WEIGHT

Ca. 460 gr/m²

TOTAL WEIGHT

Ca. 1 490 gr/m²

PILE HEIGHT

Ca. 2.5 mm

TOTAL HEIGHT

Ca. 4.2 mm

TUFT DENSITY

Ca. 205 000/m²

PILE DENSITY

Ca. 0.135 g/cm³

CLASSIFICATION

EN 1307

33 - LC1

UPEC

U3 P3 E1 C0

Homologation CSTB: 10/271

CASTOR CHAIR SUITABILITY

EN 985

A: intensive use

STAIR SUITABILITY

EN 1963

A: intensive use

PERMANENTLY ANTISTATIC

ISO 6356

≤ 2 kV

IMPACT NOISE RATING

ISO 140-8

21 dB ΔLw

SOUND ABSORPTION

ISO 354

0.15 αw

THERMAL RESISTANCE

ISO 8302

0.06 m² K/W

FASTNESS TO LIGHT

ISO 105-B02

≥ 5-6

COLOUR FASTNESS TO WATER

EN ISO 105-E01

≥ 4-5

FIRE RESISTANCE

EN 13501-1

Cfl-s1

RUBBING FASTNESS

EN ISO 105-X12

≥ 4

NUMBER OF COLOURS

26

WIDTH

EN ISO 3018

ca. 400 cm







 **arc edition**[®]
performance flooring
by Balta

Balta Industries nv - Kanegemstraat 15 - B-8700 Tielt - Belgium
T +32 (0)51 42 44 11 - F +32 (0)51 42 44 85
info@arcedition.com - www.arcedition.com