



æ

e-ssential

THE ELEMENTARY COLLECTION



Index

1/ <i>e</i> -major	4
2/ <i>e</i> -grid	10
3/ <i>e</i> -rock	16
4/ <i>e</i> -weave	22
5/ <i>e</i> -touch	28



e-ssential

THE ELEMENTARY COLLECTION

The one place that we find everything essential to our existence, is **nature**.

An oasis of inspiration and comfort, *e*-ssential introduces **five carpet styles** made with **100% PA solution-dyed fibre**. Providing **excellent light-fastness**, *e*-ssential is a durable and **environmentally-friendly choice**, especially in areas exposed to strong sunlight.

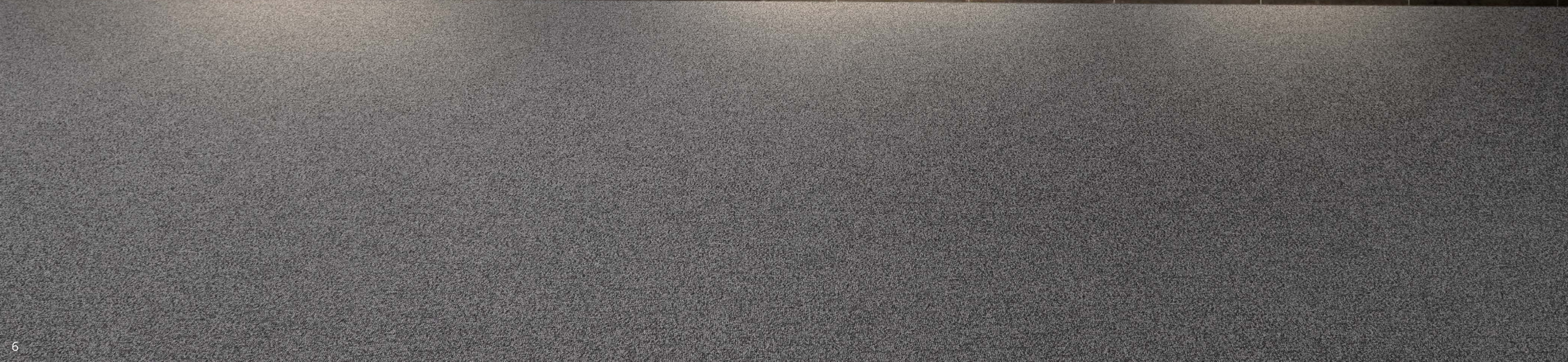
What's more; *e*-major, *e*-grid, *e*-rock, *e*-weave and *e*-touch feature impressive stain-resistance and are easy to maintain. **Easy to clean, strong and comfortable**, this carpet collection is an **elementary choice** for commercial spaces.

e-major

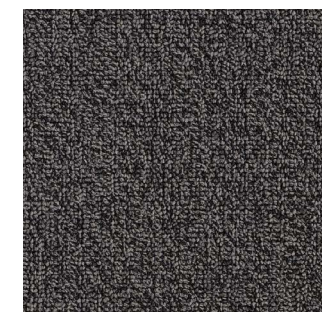
1/

e-major

A level-loop pile in a subtle grain effect, *e-major* brings a contemporary aesthetic that minimises the appearance of footprints. Remarkably resistant to sunlight and easy to clean, *e-major* is an ideal fit in high-traffic areas such as hotel lobbies or airport halls. Make a lasting impression with the majestic design of *e-major*.

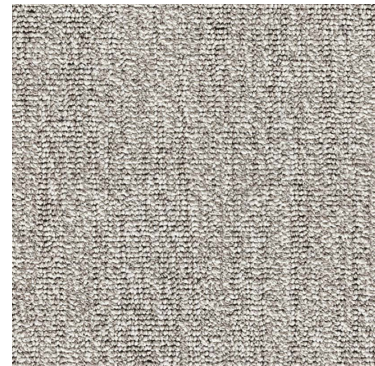


e-major

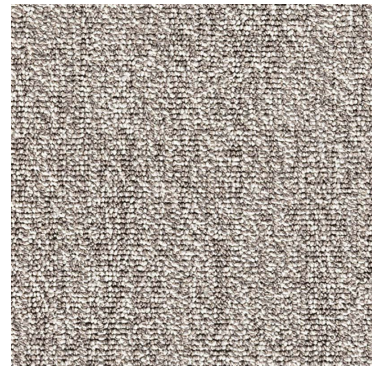


e-major 98

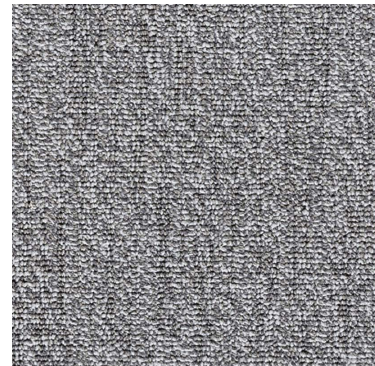
e-major | COLOURS



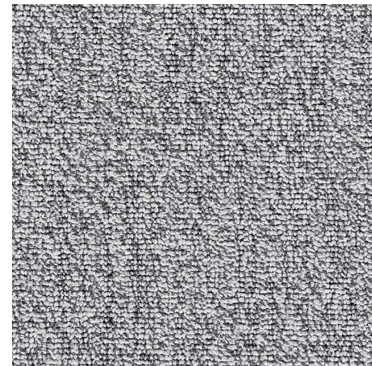
e-major 32



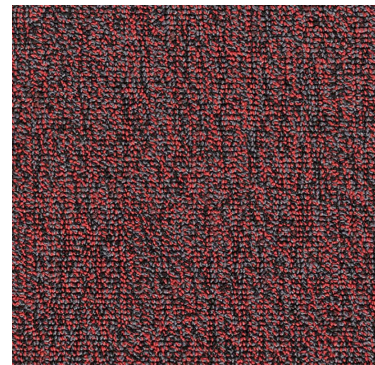
e-major 47



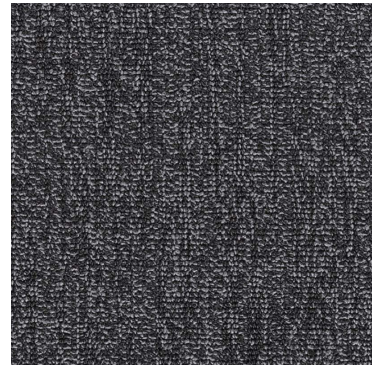
e-major 93



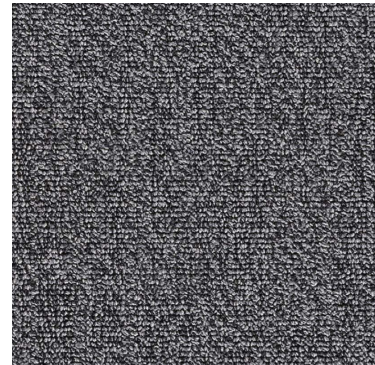
e-major 90



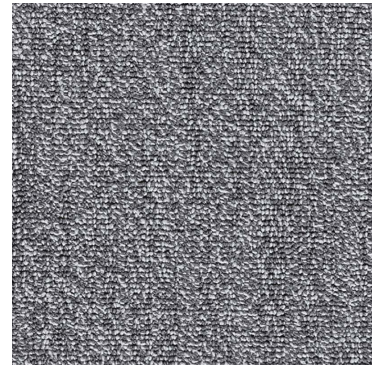
e-major 12



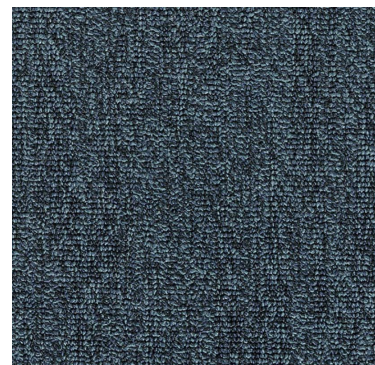
e-major 98



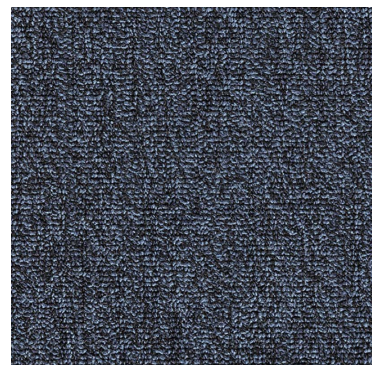
e-major 96



e-major 97



e-major 72



e-major 78

e-major | TECHNICAL SPECIFICATIONS

CONSTRUCTION

Tufting 1/10" textured loop

PILE MATERIAL

100% PA solution dyed

PRIMARY BACKING

Non woven PES

SECONDARY BACKING

Action Back

PILE WEIGHT

Ca. 590 gr/m²

TOTAL WEIGHT

Ca. 1.950 gr/m²

PILE HEIGHT

Ca. 2,9 mm

TOTAL HEIGHT

Ca. 5,8 mm

TUFT DENSITY

Ca. 125 000/m²

PILE DENSITY

Ca. 0.109 g/cm³

CLASSIFICATION

EN 1307

33 - LC1

CASTOR CHAIR SUITABILITY

EN 985

A: intensive use

STAIR SUITABILITY

EN 1963

A: intensive use

PERMANENTLY ANTISTATIC

ISO 6356

< 2 kV

IMPACT NOISE RATING

ISO 140-8

24 dB ΔLw

SOUND ABSORPTION

ISO 354

0.15 αw

THERMAL RESISTANCE

ISO 8302

0.073 m² K/W

FASTNESS TO LIGHT

ISO 105-B02

≥ 7

COLOUR FASTNESS TO WATER

EN ISO 105-E01

≥ 4-5

RUBBING FASTNESS

EN ISO 105-X12

≥ 4

FIRE RESISTANCE

EN 13501-1

Cfl-s1

NUMBER OF COLOURS

10

WIDTH

EN ISO 3018

ca. 400 cm



05/18 We reserve all rights for technical improvements.

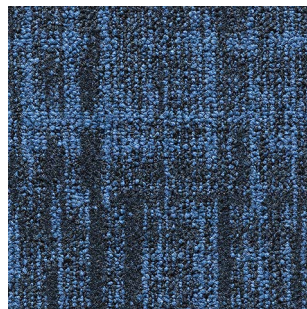


2/

e-grid

Combining tip-sheared texture with a fascinating pattern, *e-grid* blends the classic and contemporary. With a velvet-look that's Class 33 Heavy Commercial certified, *e-grid* brings luxury to high-traffic areas. Go for durability, light-fastness and style with *e-grid*.

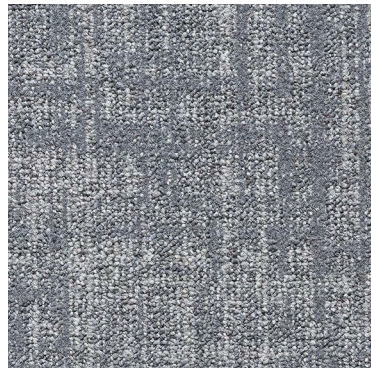
e-grid



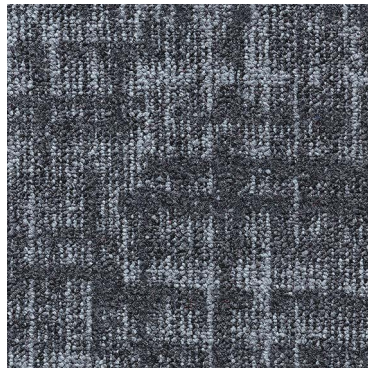
e-grid 78



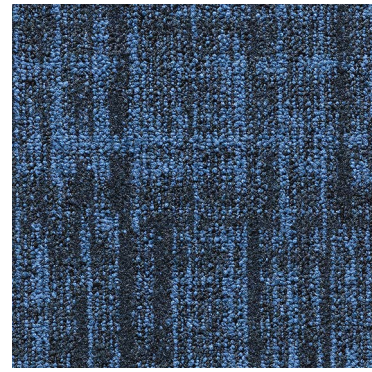
e-grid | COLOURS



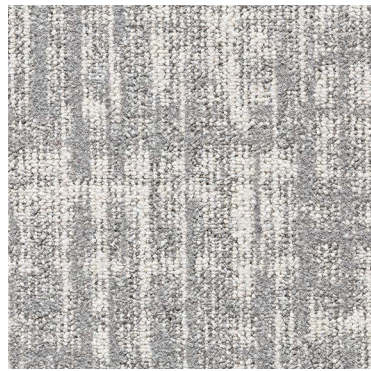
e-grid 95



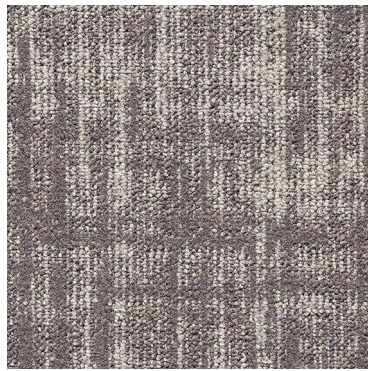
e-grid 98



e-grid 78



e-grid 93



e-grid 49

e-grid | TECHNICAL SPECIFICATIONS

CONSTRUCTION

Tufting 1/12" i-tuft

PILE MATERIAL

100% PA solution dyed

PRIMARY BACKING

Non woven

SECONDARY BACKING

Action Back

PILE WEIGHT

Ca. 780 gr/m²

TOTAL WEIGHT

2 100 gr/m²

PILE HEIGHT

Ca. 3.4 mm

TOTAL HEIGHT

Ca. 6.3 mm

TUFT DENSITY

Ca. 225 600/m²

PILE DENSITY

Ca. 0.143 g/cm³

CLASSIFICATION

EN 1307

33 - LC2

CASTOR CHAIR SUITABILITY

EN 985

A: intensive use

STAIR SUITABILITY

EN 1963

A: intensive use

PERMANENTLY ANTISTATIC

ISO 6356

< 2 kV

IMPACT NOISE RATING

ISO 140-8

26 dB ΔLw

SOUND ABSORPTION

ISO 354

0.20 aw

THERMAL RESISTANCE

ISO 8302

0.09 m²K/W

FASTNESS TO LIGHT

ISO 105-B02

≥ 7

COLOUR FASTNESS TO WATER

EN ISO 105-E01

≥ 4-5

RUBBING FASTNESS

EN ISO 105-X12

≥ 4

FIRE RESISTANCE

EN 13501-1

Cfl-s1

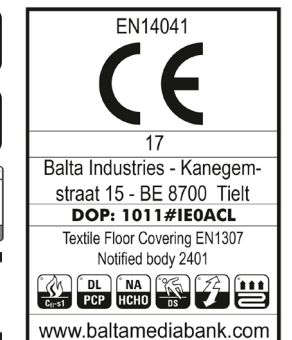
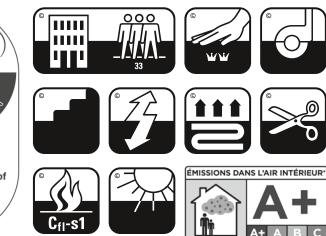
NUMBER OF COLOURS

5

WIDTH

EN ISO 3018

ca. 400 cm





e-rock

3/

e-rock

Solid as a rock, this is a design that is sure to make a statement in any room. A tip-sheared texture brings a luxurious velvet surface that provides wonderful underfoot comfort and acoustic absorption. A modern, strong look that guarantees long-lasting colour.



e-rock

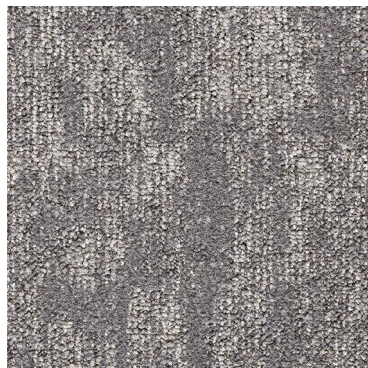


e-rock 49

e-rock | COLOURS



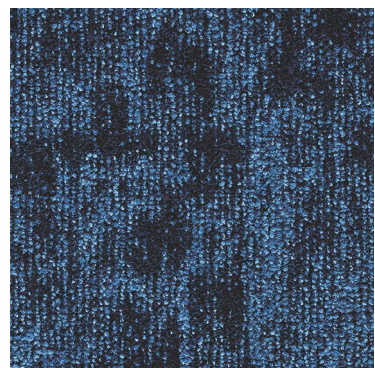
e-rock 93



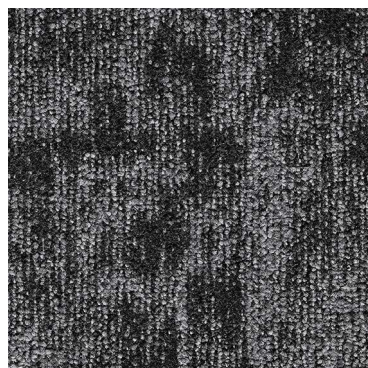
e-rock 95



e-rock 49



e-rock 78



e-rock 98

e-rock | TECHNICAL SPECIFICATIONS

CONSTRUCTION

Tufting 1/12" i-tuft

PILE MATERIAL

100% PA solution dyed

PRIMARY BACKING

Non woven

SECONDARY BACKING

Action Back

PILE WEIGHT

Ca. 720 gr/m²

TOTAL WEIGHT

Ca. 2.250 gr/m²

PILE HEIGHT

Ca. 3,2 mm

TOTAL HEIGHT

Ca. 6,2 mm

TUFT DENSITY

Ca. 235 000/m²

PILE DENSITY

Ca. 0,140 g/cm³

CLASSIFICATION

EN 1307

33 - LC2

CASTOR CHAIR SUITABILITY

EN 985

A: intensive use

STAIR SUITABILITY

EN 1963

A: intensive use

PERMANENTLY ANTISTATIC

ISO 6356

< 2 kV

IMPACT NOISE RATING

ISO 140-8

24 dB ΔLw

SOUND ABSORPTION

ISO 354

0.20 αw

THERMAL RESISTANCE

ISO 8302

0.072 m² K/W

FASTNESS TO LIGHT

ISO 105-B02

≥ 7

COLOUR FASTNESS TO WATER

EN ISO 105-E01

≥ 4-5

RUBBING FASTNESS

EN ISO 105-X12

≥ 4

FIRE RESISTANCE

EN 13501-1

Cfl-s1

NUMBER OF COLOURS

5

WIDTH

EN ISO 3018

ca. 400 cm

TUV NORD
 TÜV NORD System
 2018-01-19
 Voluntary Material Test
 according to TUV NORD Standard
 Suitable for Allergic Persons
 Wall to wall carpet of allergen-tested material
 3.2-2384/05

CE
 EN14041
 18
 Balta Industries - Kanegem-
 straat 15 - BE 8700 Tielt
DOP: 1011#IE0ACL
 Textile Floor Covering EN1307
 Notified body 2401
 www.baltamediabank.com

REG. NR
BBF9F1A6
 www.pro-dis.info

EAC

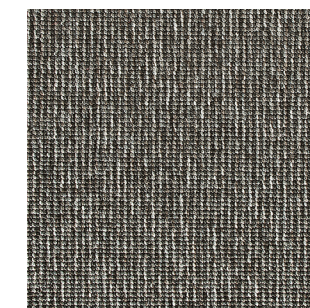
e-weave

4/

e-weave

Nature meets modernity in *e-weave*, possessing the collection's finest weave. This two-tone design displays a subtle elegance that never goes out of style. With a striking minimalist look, *e-weave* delivers impressive wear-resistance and durability.

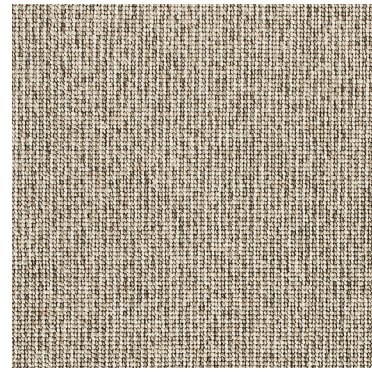
e-weave



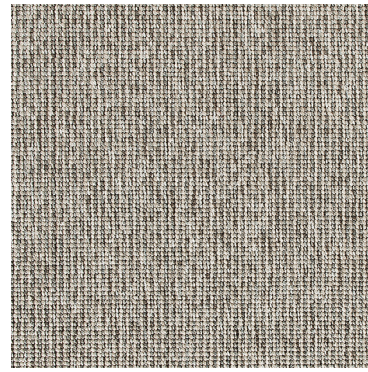
e-weave 98



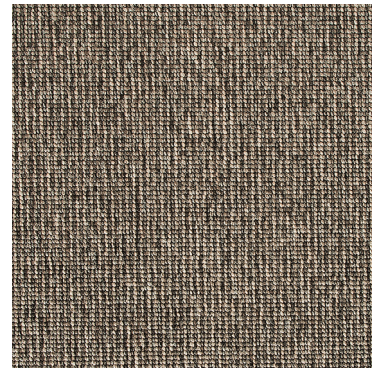
e-weave | COLOURS



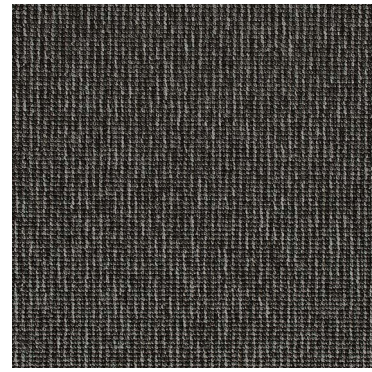
e-weave 34



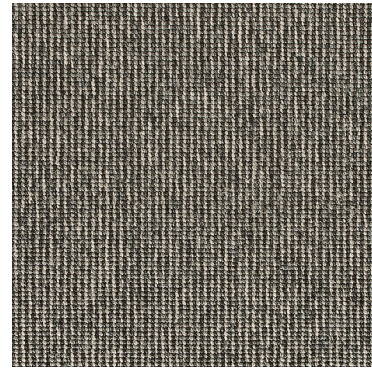
e-weave 93



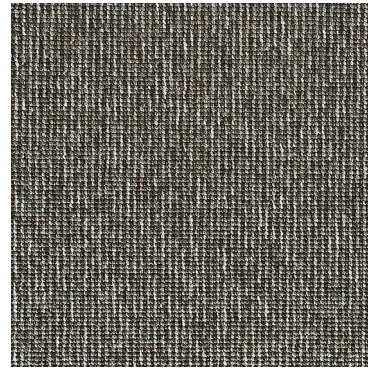
e-weave 49



e-weave 99



e-weave 96



e-weave 98

e-weave | TECHNICAL SPECIFICATIONS

CONSTRUCTION

Tufting 5/64" minituft

PILE MATERIAL

100% PA solution dyed

PRIMARY BACKING

Non woven PES

SECONDARY BACKING

Action Back

PILE WEIGHT

Ca. 500 gr/m²

TOTAL WEIGHT

Ca. 2 095 gr/m²

PILE HEIGHT

Ca. 1.1 mm

TOTAL HEIGHT

Ca. 5.1 mm

TUFT DENSITY

Ca. 200 000/m²

PILE DENSITY

Ca. 0.156 g/cm³

CLASSIFICATION

EN 1307

33 - LC1

CASTOR CHAIR SUITABILITY

EN 985

A: intensive use

STAIR SUITABILITY

EN 1963

A: intensive use

PERMANENTLY ANTISTATIC

ISO 6356

< 2 kV

IMPACT NOISE RATING

ISO 140-8

18 dB ΔLw

SOUND ABSORPTION

ISO 354

0.15 aw

THERMAL RESISTANCE

ISO 8302

0.05 m² K/W

FASTNESS TO LIGHT

ISO 105-B02

≥ 7

COLOUR FASTNESS TO WATER

EN ISO 105-E01

≥ 4-5

RUBBING FASTNESS

EN ISO 105-X12

≥ 4

FIRE RESISTANCE

EN 13501-1

Cfl-s1 (if glued)

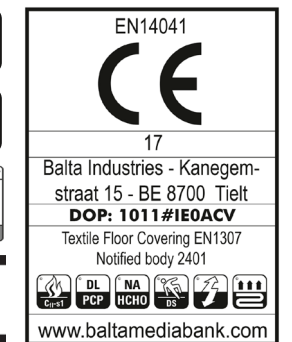
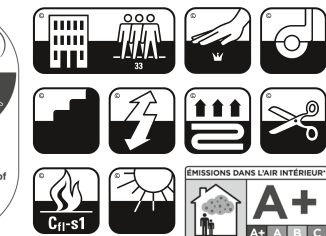
NUMBER OF COLOURS

6

WIDTH

EN ISO 3018

ca. 400 cm



e-touch

5/

e-touch

Enjoy the sublime comfort of *e-touch*'s luxurious quality. Soft underfoot, *e-touch* offers excellent acoustic absorption and a sumptuous feel. Impressively quiet and with supreme performance, *e-touch* is a win-win in any commercial space.

e-touch



e-touch 94



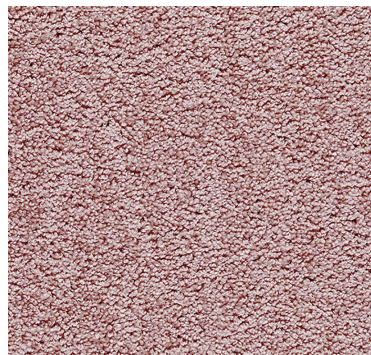
e-touch | COLOURS



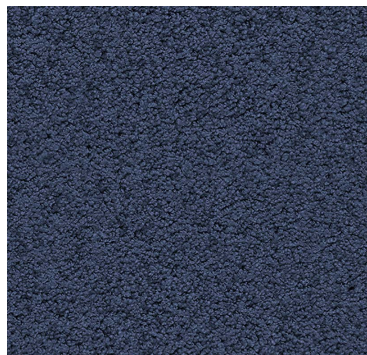
e-touch 33



e-touch 34



e-touch 63



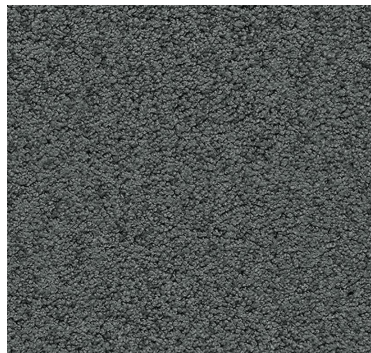
e-touch 77



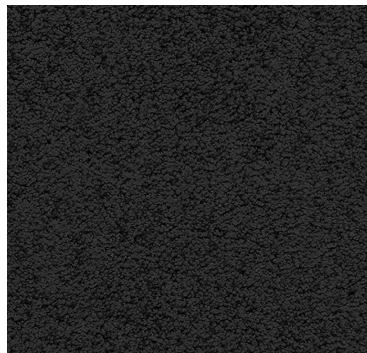
e-touch 93



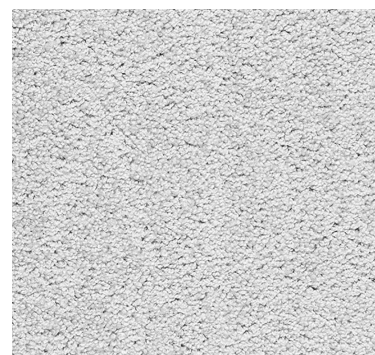
e-touch 94



e-touch 98



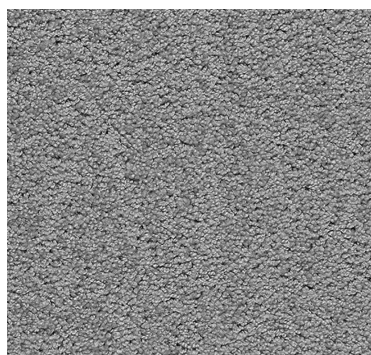
e-touch 99



e-touch 190



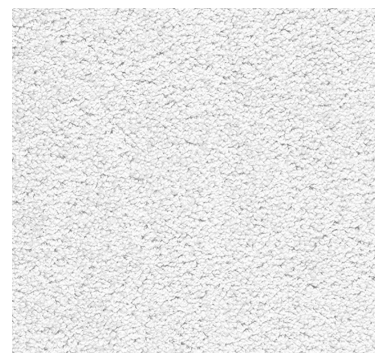
e-touch 96



e-touch 95



e-touch 97



e-touch 90

e-touch | TECHNICAL SPECIFICATIONS

CONSTRUCTION

Tufting 1/8" saxony frisé

PILE MATERIAL

100% PA Solution Dyed

PRIMARY BACKING

Non woven PES

SECONDARY BACKING

Action Back

PILE WEIGHT

Ca. 1.575 gr/m²

TOTAL WEIGHT

Ca. 2.285 gr/m²

PILE HEIGHT

Ca. 10,3 mm

TOTAL HEIGHT

Ca. 12,3 mm

TUFT DENSITY

Ca. 195 000/m²

PILE DENSITY

Ca. 0,132 g/cm³

CLASSIFICATION

EN 1307

32 - LC5

CASTOR CHAIR SUITABILITY

EN 985

B: occasional use

STAIR SUITABILITY

EN 1963

B: occasional use

PERMANENTLY ANTISTATIC

ISO 6356

< 2 kV

IMPACT NOISE RATING

ISO 140-8

27 dB ΔLw

SOUND ABSORPTION

ISO 354

0,25 αw

THERMAL RESISTANCE

ISO 8302

0,188 m² K/W

FASTNESS TO LIGHT

ISO 105-B02

≥ 7

COLOUR FASTNESS TO WATER

EN ISO 105-E01

≥ 4-5

RUBBING FASTNESS

EN ISO 105-X12

≥ 4

FIRE RESISTANCE

EN 13501-1

Cfl-s1

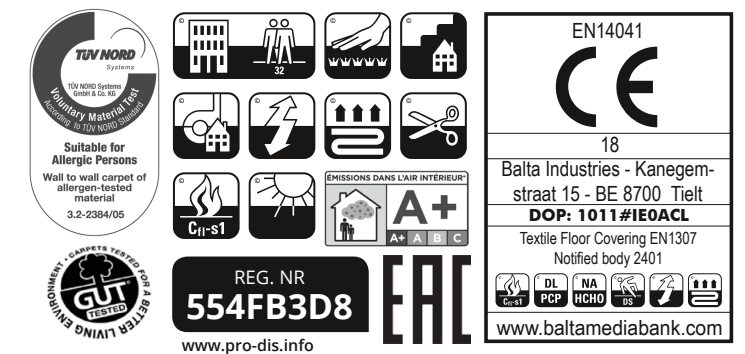
NUMBER OF COLOURS

13

WIDTH

EN ISO 3018

ca. 400 cm



08/18 We reserve all rights for technical improvements.



Is e-ssential your natural choice?
Let's talk!

INFO@ARCEDITION.COM



Balta Industries nv - Kanegemstraat 15
B-8700 Tielt - Belgium - T +32 (0)51 42 44 11
info@arcedition.com - www.arcedition.com

e-ssential

THE ELEMENTARY COLLECTION

www.arcedition.com

 **arc edition**[®]
performance flooring
by Balta