

# Lily

## 1/10" uni saxony

100% solution dyed  
PA IMPREL® FINESSE

RUG  
Twinback

POOLHOOGTE  
± 5,5 mm

TOTALE HOOGTE  
± 8,5 mm

POOLGEWICHT  
± 935 g/m<sup>2</sup>

TOTAAL GEWICHT  
± 1.900 g/m<sup>2</sup>

AANTAL NOPPEN/M<sup>2</sup>  
± 201 500

LICHTECHTHEID  
≥ 7

WATERECHTHEID  
≥ 4-5

WARMTEDOORLAATWEERST.  
± 0,147 m<sup>2</sup> K/W

BRANDKLASSE  
Cfl-s1 (EN 13501-1)  
indien verkleefd

## 1/10" saxony uni

100% solution dyed  
PA IMPREL® FINESSE

DOSSIER  
Twinback

HAUTEUR DU VELOURS  
± 5,5 mm

HAUTEUR TOTALE  
± 8,5 mm

POIDS DU VELOURS  
± 935 g/m<sup>2</sup>

POIDS TOTAL  
± 1.900 g/m<sup>2</sup>

NOMBRE DE POINTS/M<sup>2</sup>  
± 201 500

RÉSISTANCE À LA LUMIÈRE  
≥ 7

RÉSISTANCE À L'EAU  
≥ 4-5

RÉSISTANCE THERMIQUE  
± 0,147 m<sup>2</sup> K/W

CLASSEMENT FEU  
Cfl-s1 (EN 13501-1)  
en pose collée

## 1/10" Uni-Saxony

100% solution dyed  
PA IMPREL® FINESSE

RÜCKEN  
Twinback

POLHÖHE  
± 5,5 mm

GESAMTHÖHE  
± 8,5 mm

POLGEWICHT  
± 935 g/m<sup>2</sup>

GESAMTGEWICHT  
± 1.900 g/m<sup>2</sup>

NOPPEN/M<sup>2</sup>  
± 201 500

LICHTECHTHEIT  
≥ 7

WASSERECHTHEIT  
≥ 4-5

WÄRMEDURCHLASSWIDERST.  
± 0,147 m<sup>2</sup> K/W

BRANDKLASSE  
Cfl-s1 (EN 13501-1)  
verklebt

## 1/10" plain saxony

100% solution dyed  
PA IMPREL® FINESSE

BACKING  
Twinback

PILE HEIGHT  
± 5,5 mm

TOTAL HEIGHT  
± 8,5 mm

PILE WEIGHT  
± 935 g/m<sup>2</sup>

TOTAL WEIGHT  
± 1.900 g/m<sup>2</sup>

TUFT DENSITY/M<sup>2</sup>  
± 201 500

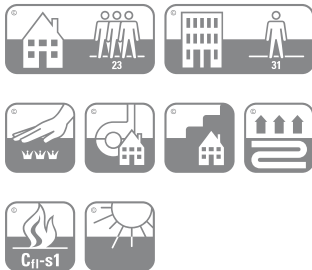
LIGHT FASTNESS  
≥ 7

WATER RESISTANCE  
≥ 4-5

THERMAL RESISTANCE  
± 0,147 m<sup>2</sup> K/W

FIRE CLASS  
Cfl-s1 (EN 13501-1)  
if glued

EN14041  
**CE**  
19  
Balta Industries - Kanegem-  
straat 15 - BE 8700 Tielt  
DOP: 1011#IE00CV  
Textile Floor Covering EN 1307  
Notified body 2401  
www.baltamediabank.com



REG. NR  
**CAA853D3**  
www.pro-dis.info



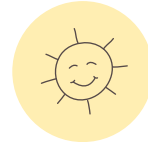
LIFETIME STAINSAFE  
WARRANTY



ETERNAL BLEACH  
CLEANABILITY



20 YEARS  
WEAR WARRANTY



INFINITE  
LIGHT FASTNESS



EVERLASTING  
SOFTNESS



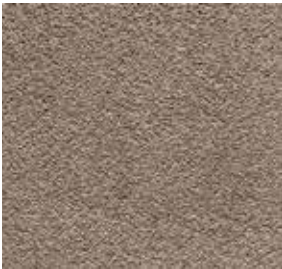
Onder voorbehoud van wijzingen van de technische specificaties - Sous réserve de modifications techniques - Unter Vorbehalt von technischen Änderungen - All rights reserved to alter technical specification

	27	30	33	35	37	43	47	63	74	77	86	90	93	95	96	97	98
ca 4m	.	.	.	.	.	.	.	.	.	.	.	.	.	.	.	.	.
ca 5m	.	.	.	.	.	.	.	.	.	.	.	.	.	.	.	.	.

# Lily



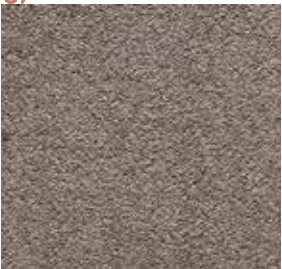
63



37



33



43



47



93



90



30



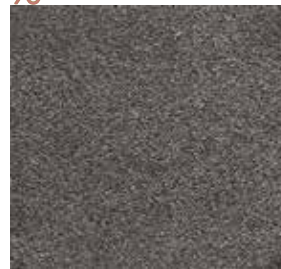
86



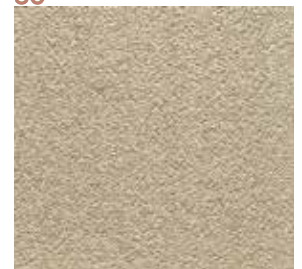
98



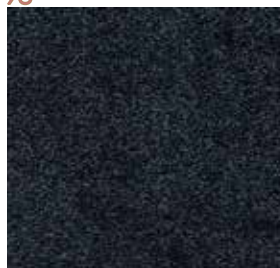
97



96



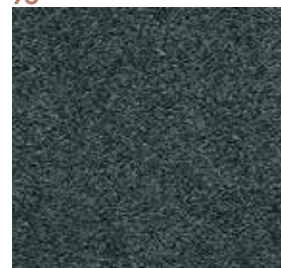
35



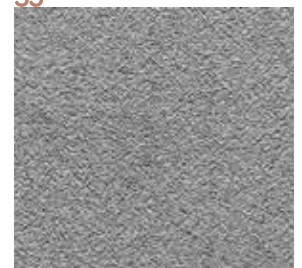
77



74



27



95